

ETRUSCAN (and ROMAN ART)

Etruscan (800 - 500 BCE the same as Archaic Greece)
 Monarchy (753 BCE - 509 BCE) Republic (509 BCE - 27 CE)
 Early Empire (27 CE - 96 CE) High Empire (96 CE - 192 CE)
 Late Empire (193 CE - 237 CE)



What is the FUNCTION of these art works?

Contributions to architecture by the Romans:

1. Building for use - addressing the practical problems of everyday city life
 - a shift from religious buildings to civil engineering projects
2. Developing the arch and vault as a structural principle
 - increase in scale of building exterior and interiors made possible
3. Emphasis on verticality made possible by the use of concrete
 - new height of buildings and multi-use facilities
4. Design of significant interiors - greater variety and complexity of forms
 - Romans treated space and light as tangible realities

Gardner's Art through the Ages: A Concise Global History

STOKSTAD, 5th Edition, Chapter 5, pages 101 - 155

CONTEXT

The art of **Etruria (Etruscan) and Rome is grounded in civic ideals and polytheism. Etruscan and Roman artists and architects accumulated and adapted Greek objects and forms to create buildings and artworks that appealed to their tastes for eclecticism and historicism** (social and cultural phenomena determined by history). **Etruscan art (700-100 BCE, Etruria) and ancient Roman art**, was produced in Europe and Western Asia from **753 BCE to 337 CE. Archaeological models and artworks are identified by periods based on stylistic changes and assigned to periods according to styles, governments, or dynasties (the Roman Republic). Etruscan art is considered as a single culture** (not the separate city-states Etruria was made up of). **Roman art includes art from the republican, early imperial, late imperial, and late antique periods**, using governmental structures and dynasties rather than stylistic characteristics. Etruscan and Roman artists and architects were influenced by earlier Mediterranean cultures. **Art from Etruscan and Roman periods is typified by stylistic and iconographical eclecticism and portraiture, expresses republican and imperial values, power, and a preference for conspicuous display.** Etruscan and Roman architecture are **characterized by investment in public structures** and Roman architecture **borrowed from the Greeks and Etruscans, and by technical innovation.** Roman art provides the foundation for the later development of European and Mediterranean artistic traditions. **Europeans and Americans admired ancient Roman ethical and governmental systems**, which contributed to prioritizing art and architecture **associated with political elites and cultural capitals** (Rome). Etruscan and Roman cultures had a **tradition of epic storytelling that glorified the exploits of gods, goddesses, and heroes.** They had a highly developed rhetorical tradition that prized public oratory and poetry. Religious rituals and future predictions were guided by oral traditions, not texts.

ARTWORKS

ETRUSCAN:

31. Temple of Minerva

31. Apollo from Veii

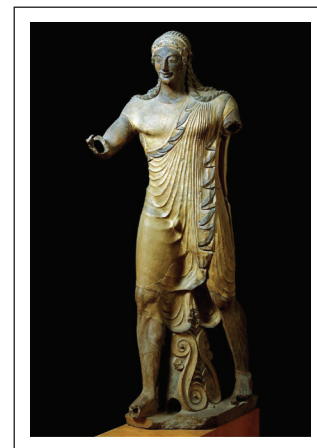
32. Tomb of the Triclinium (Tomb of the Leopards)

29. Sarcophagus of the Spouses

Additional Images:

Capitoline Wolf

The Orator



VOCABULARY:

necropolis
 tumulus
 portico
 terra cotta
 sarcophagus
 pseudo peripteral temples